

Bed & Breakfast



Stay in our listed Georgian Property in the picturesque village of Montacute where the historic house and square were used in the filming of Jane Austins 'Sense & Sensibility'.

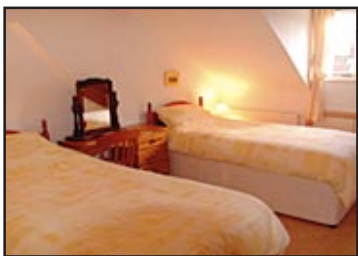
Rich in local heritage.

We are close to:

- Montacute House & other N.T. properties
- Numerous gardens
- Fleet Air Arm museum
- Haynes motor museum & much more



We are ideally situated for walking; with footpaths, woods & Ham Hill Country Park nearby. We are also on the Leyland & Liberty Trails and South Somerset cycle route.



~ B&B Open All Year ~

- Non smoking
- Comfortable rooms
- Colour TV
- Clock/radios
- Tea/coffee making
- Central Heating
- En-suites
- Traditional & healthy Option breakfast

Single

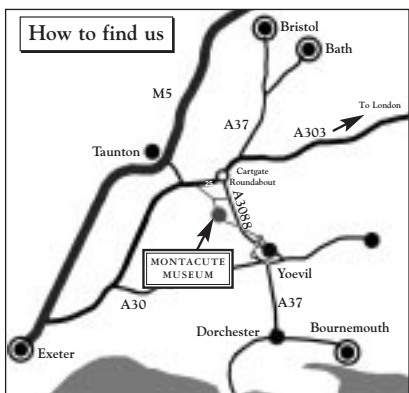
Double / Twin

Family

From A303 -At Cartgate roundabout turn onto A3088 and follow the signs for Montacute.

From Yeovil - Take A3088 and follow signs for Montacute.

We are situated in the centre of Montacute village near the borough or village square. Parking in the Borough.



1 SOUTH ST, MONTACUTE, SOMERSET TA15 6XD

Telephone (01935)823024

E-mail: info@montacutemuseum.co.uk

www.montacutemuseum.co.uk

© printed by 0845 230 1935

MONTACUTE

TV & RADIO

TOY MUSEUM

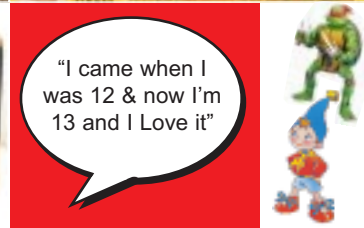
Probably the largest collection of its kind

Nostalgic experiences of TV Programmes through the years

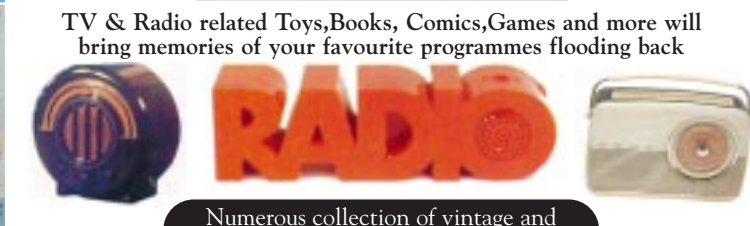
Between Yeovil & A303, just off A3088



"We could spend a whole day here"



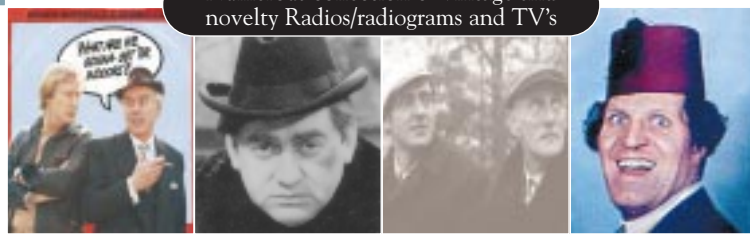
"I came when I was 12 & now I'm 13 and I Love it"



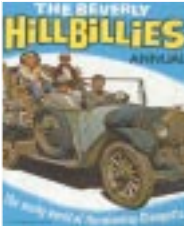
TV & Radio related Toys, Books, Comics, Games and more will bring memories of your favourite programmes flooding back



"Our 3rd visit. Its so good once is not enough"



Numerous collection of vintage and novelty Radios/radiograms and TV's



Museum Shop
TV & Radio related books, toys, games & Memorabilia. Pictures & items of nostalgia. Items also available by post. See our website.

"Great reminders of our childhood"

Museum & Shop Opening*
SUMMER: Easter to end September
Wednesday to Saturday & Bank Holiday Mondays;
12.30p-5pm & Sundays 2-5pm
WINTER: See our website, phone or e-mail for details

Lunch/Tea Rooms & Garden

Groups
Museum, shop, tearooms open anytime by arrangement (max 50).



Tea/Lunch Rooms Opening*
As museum for school and bank holidays. Refreshments may be restricted at other times (except for groups) - see website



*On occasions this may alter due to special events - see website for details
No admission charges to lunch/tea rooms and shop.
www.montacutemuseum.co.uk

- Lunches - All Afternoon
- Large Vegetarian Choice
- Home Made Cakes
- Cream Teas
- West Country Ice Creams